

# Updating of Technical Map for urban and sub-urban Road projects from Satellite Image

## TECHNICAL MAP OUTPUT – ROAD

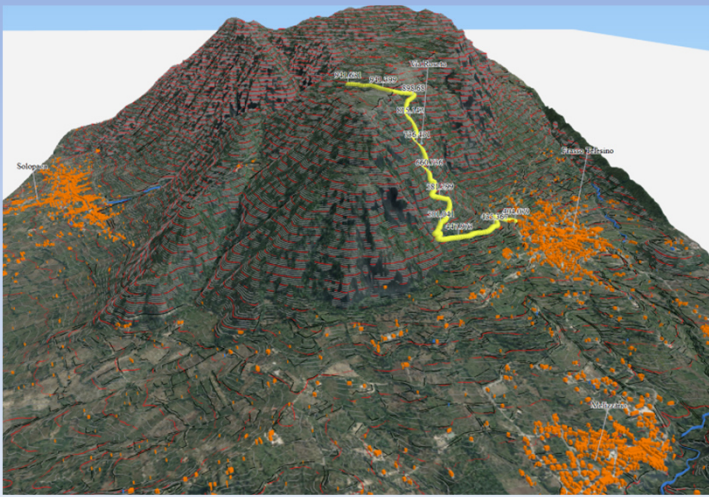


Fig.1 – Altimetric trend and DEM 3D.

**Main objective:** The design of roads and their modernization requires more and more surveys of the state of affairs that take into account the changing conditions of the territory over time. For this reason the survey from satellite data for the nascent infrastructures or their modernization is very useful in the design phase of these works.

Specifically, we were interested in the survey of the change in the road network with satellite data and, through the construction of the Digital Elevation Model, we found listed points and listed longitude profiles of the same.

Moreover, the new layouts have been themed in the maps of environmental constraints existing on the territory for a correct environmental and strategic evaluation.

## TECHNICAL MAP OUTPUT - ROAD

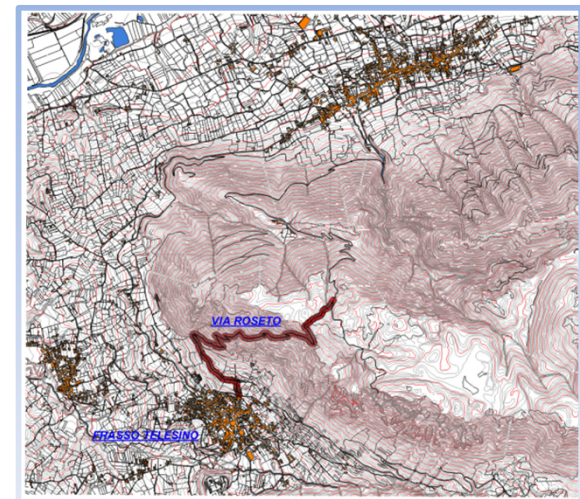
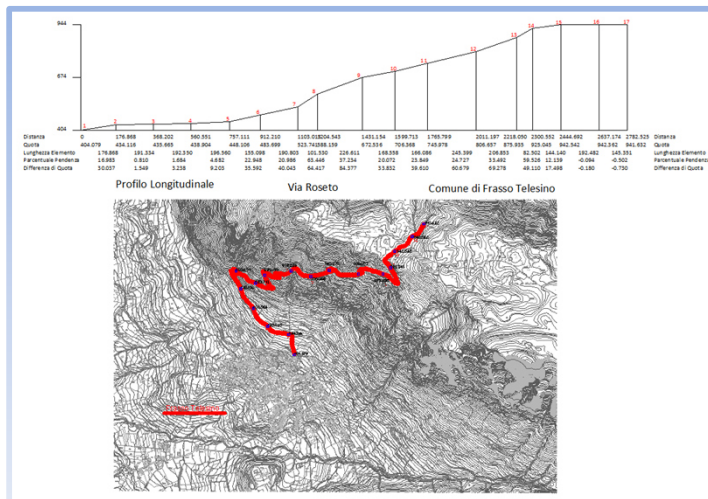


Fig.2 – Planimetric and Altimetric Technical Map - Road. a) Altimetric trend profile, b) DEM 3D and c) Planimetric Map.